

# STUDY ABROAD STUDENT GUIDE: LONDON





# CONTENTS

STUDY ABROAD AT RICHMOND	4
WHY RICHMOND AMERICAN UNIVERSITY LONDON?	6
OUR PROGRAMS	7
OUR NEW HOME	8
ACCOMMODATION	12
LOCATION, LOCATION, LOCATION	13
LONDON AS YOUR CLASSROOM	14
THE RICHMOND INTERNSHIP	15
ENTRY REQUIREMENTS	16
HOW TO APPLY	17
CONTACT US	19



My overall evaluation for my time at Richmond can be described in one word: incredible. All of my professors were fantastic, they were engaged, knowledgeable, and overall just great professors.

The workload is manageable, and all of the professors I had explained everything to me and made me feel prepared for all that I had to do.

I think the program as a whole was fantastic.”

**JAMES NUGENT**

Visiting Student

# STUDY ABROAD WITH RICHMOND AMERICAN UNIVERSITY LONDON

Richmond American University London is a unique London-based university offering exciting and cutting-edge Study Abroad programs which are accredited by the Middle States Commission on Higher Education in the US and validated in the UK.

What makes us special? We award a UK and US qualification at both undergraduate and master's degree level. Richmond was the first UK university to be granted this power to award dual taught degrees in 2018. The high standards of teaching and academic support at the University have been recognised in the 2023 National Student Survey (NSS) results where 95 per cent of Richmond final-year students said that teaching staff supported their learning well.

Join one of the top five London universities for overall satisfaction levels in the quality of the course as voted by our students in the 2021 National Student Survey (NSS) results.

## AWARD-WINNING TEAM

We are proud to have an award-winning International Programme team, winner of the UK's Advancing International Education Award in the highly prestigious Independent Higher Education Awards 2022. This Award recognised the team's work in assisting Ukrainian students to continue with their studies after the invasion.

The range of free initiatives included room and board for refugee students over summer 2022, organising online classes with university partner Ukrainian American Concordia University for students still in Ukraine, setting up full year tuition scholarships for students to come to London, and working with our housing partner on free accommodation.



IN AGREEMENT WITH:



USC University of Southern California

CONDÉ NAST COLLEGE of FASHION & DESIGN



Tulane University



SMU



UNIVERSIDAD DE Belgrano BUENOS AIRES - ARGENTINA



DRAPER UNIVERSITY

DUNIS UNIVERSITY OF INTERNATIONAL STUDIES

EDHEC BUSINESS SCHOOL



IOWA STATE UNIVERSITY



JOHN CABOT UNIVERSITY

An American university in the heart of Rome

KUJ KANAGAWA UNIVERSITY

ONH Oslo New University College

Paris School of Business

RMC Randolph-Macon College

SEWANEE THE UNIVERSITY OF THE SOUTH



PUKYONG NATIONAL UNIVERSITY

SUU SOUTHERN UTAH UNIVERSITY

The University of Akron



UNIVERSITY OF NEW YORK IN PRAGUE



University of San Diego



UNIVERSITY OF South Carolina



VICTORIA UNIVERSITY OF WELLINGTON TE HERENGA WAKA

# WHY RICHMOND AMERICAN UNIVERSITY LONDON?

We are a global community with staff, students and alumni from over 100 countries, creating an academic environment that is welcoming, nurturing and diverse. You will study a global curriculum in London with students from across the world and learn to understand and celebrate what makes us different and what makes us the same. Choose your own path and decide your major and minor as you learn and develop rather than having to decide before you arrive. Enjoy flexibility across your subjects and the chance to study and to intern across the globe - a life-transforming opportunity.

## STANDOUT FEATURES OF THE RICHMOND PROGRAMS INCLUDE:

- A US curriculum, allowing for easy transfer credits back to a home university
- Faculty that are well-qualified, experienced and research-active
- Smaller, more intimate classes combined with substantial weekly contact hours
- State of the art campus facility for students in the west London borough of Chiswick
- A choice of single or double occupancy accommodation options with all the amenities
- Fully supported for-credit workplace internships in the UK, Italy, China, Argentina, or South Africa
- A choice of over 500 classes per year, allowing students to study abroad for a summer, semester or year whilst not losing time at their home institution

## Additional benefits of the Richmond Study Abroad experience in London include:

- An extensive social and cultural program of trips and activities to further student learning
- Exciting classes on topics as diverse as British fantasy writing and fashion and media
- On-campus security and emergency assistance
- Award winning International Programs team
- Personalized and dedicated academic advisors
- University organized trips throughout the UK and Europe
- A specialized orientation program
- Computer labs
- Airport arrival pick-up service included in the tuition price
- Students can choose classes which can earn them an additional certificate in British Studies or a certificate in Fashion Management and Marketing (in partnership with Condé Nast College of Fashion & Design).

## SUPPORT WHILE YOU STUDY

Our award-winning Student Affairs team, who are dedicated to students' welfare, safety and development, aims to provide all students with the best possible experience of university life, offering help on many areas including housing, health and well-being, visa support, mentoring, financial guidance and careers advice.



# OUR PROGRAMS

## UNDERGRADUATE MAJORS

- Accounting & Finance BSc (Hons)
- American Studies BA (Hons)
- Art History & Visual Culture BA (Hons)
- Business Management: Data Analytics BA (Hons)
- Business Management: Entrepreneurship BA (Hons)
- Business Management: International Business BA (Hons)
- Business Management: Human Resource Management BA (Hons)
- Communications: Advertising & Public Relations BA (Hons)
- Communications: Media Studies BA (Hons)
- Computer Science BSc (Hons)
- Digital Marketing BA (Hons)
- Digital Communication & Social Media BA (Hons)
- Economics BA (Hons)
- Fashion Management & Marketing BA (Hons)
- Film Studies BA (Hons)
- Film & Photography BA (Hons)
- Finance & Investment BA (Hons)
- International History BA (Hons)
- International Relations BA (Hons)
- International Sports Management with Men's Football BA (Hons)
- International Sports Management with Women's Football BA (Hons)
- Political Science BA (Hons)
- Psychology BA (Hons) - *BPS Accredited*

## POSTGRADUATE MASTER'S

- Advertising & Public Relations (MA)
- Art History & Visual Culture (MA)
- Film: Science Fiction & Fantasy (MA)
- Film: Science Fiction & Fantasy (MA), London to LA Spring Semester
- International Business Management (MSc)
- International Relations (MA)
- Luxury Brand Management (MA)
- Master of Business Administration (MBA)  
MBA: Entrepreneurship  
MBA: Human Resource Management  
MBA: Marketing

Get in touch with us if you have any questions, to apply or review more information please visit our website at:  
[www.richmond.ac.uk/study-abroad](http://www.richmond.ac.uk/study-abroad)



# OUR NEW HOME!

All Richmond American University London students are now based in a new campus building within the innovative and award-winning Chiswick Park in west London.

Everything about this state of the art campus building in a beautiful parkland location has been designed with students in mind. It is set in a vibrant community offering a gym, cafes, bars and restaurants, with easy access to central London.

Our recommended student accommodation is less than half an hour away in West Hampstead, with other options available in West Kensington and Tower Hill.

## EMPLOYMENT OPPORTUNITIES

With over 200 companies currently based at Chiswick Park including Danone, Discovery, Starbucks and IMG, the location provides the University with new opportunities for internships and employment for students, links with local business and enterprises, and the chance for students to give back to the local community through the University's unique service learning and environmental programmes.

## SUSTAINABILITY AT THE HEART

We are committed to improving the environmental impact of the University and Chiswick Park is the perfect location to help us do that, with sustainability at the heart of its design.

The campus building features extensive natural light and ventilation which, together with a displacement heating and cooling system, significantly reduces the requirement for air-conditioning.

Excellent public transport links mean that it is easy to access by bus, tube and train. Cycling is actively encouraged with the option to hire a bike for both short- and long-term hire. The park also offers numerous bike racks and a bike repair station.



## WHERE TO FIND US

Building 12, Chiswick Park, 566 Chiswick High Road, London, W4 5AN

**Chiswick Park to Hammersmith**  
15 minutes

**Chiswick Park to Kensington High Street**  
19 minutes

**Chiswick Park to Knightsbridge**  
31 minutes

**Chiswick Park to Heathrow Airport**  
20 minutes











*My time studying at Richmond was exactly what I was expecting it to be. I love a university that has a diverse population like my school in Florida. Richmond has that exact same thing and more. The advisors, counselors, and even the professors were all outstanding human beings. It was so easy to make friends since everyone welcomed each other regardless of their background and that made it easier to settle in. I regret only signing up for a semester because it was sad having to leave the friends I made behind. Thankfully now I have a reason to come back and visit London. The experience I had was one in a lifetime opportunity that if I could do it again, I would without a second thought."*

## **FRANTZY SYLVESTRE**

Visiting Student



# ACCOMMODATION

We have two recommended providers for student accommodation - iQ and AES.

With brilliant transport links making central London accessible in 10 minutes, iQ Haywood House is located in a vibrant area with a village feel. Enjoy modern stylish living within a strong Richmond community at Haywood House.

Haywood House also features our award-winning student support system including Resident Assistants (RAs) and Resident Directors (RDs). The Residence Life team, who are student staff living in the same accommodation, know the University and London well so are excellent resources in the first weeks of term.

Brand-new apartments at AES Tower Hill offer unrivalled accommodation for students, with amazing views over London's iconic landmarks, such as Tower Bridge and the Tower of London. AES North End Road apartments offer up an ideal location within the midst of West Kensington, with Kensington Underground directly opposite the building.

## HOW TO APPLY FOR HOUSING

If you are interested in booking any of our accommodation options, in the first instance, please contact our Student Affairs Team at [studentaffairs@richmond.ac.uk](mailto:studentaffairs@richmond.ac.uk).

They will provide you with more information, answering any questions you may have and ask you to complete a pre-booking form.

## IN PARTNERSHIP WITH



**Student  
Accommodation**



**AES**

EXPERIENTIAL LEARNING & LIVING

EST- 1973



# LOCATION, LOCATION, LOCATION

## **IQ HAYWOOD HOUSE, WEST HAMPSTEAD**

iQ Haywood House, Blackburn Rd, London  
NW6 1RZ

**West Hampstead to Chiswick Park**  
23 minutes

**West Hampstead to Oxford Circus**  
12 minutes

**West Hampstead to Kensington  
High Street**  
28 minutes

**West Hampstead to Heathrow Airport**  
33 minutes



## **AES ROYAL MINT, TOWER HILL**

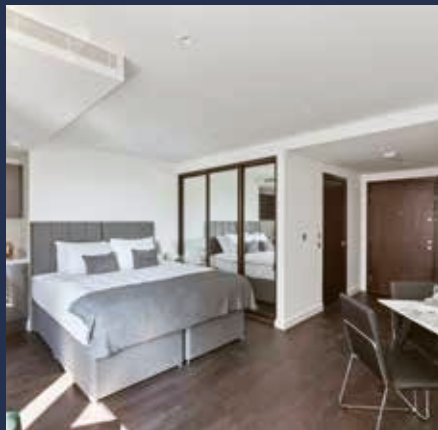
Royal Mint St, London, E1 8LG,

**Tower Hill to Chiswick Park**  
60 minutes

**Tower Hill to Oxford Circus**  
26 minutes

**Tower Hill to Kensington  
High Street**  
30 minutes

**Tower Hill to Gatwick Airport**  
50 minutes



## **AES NORTH END ROAD, WEST KENSINGTON**

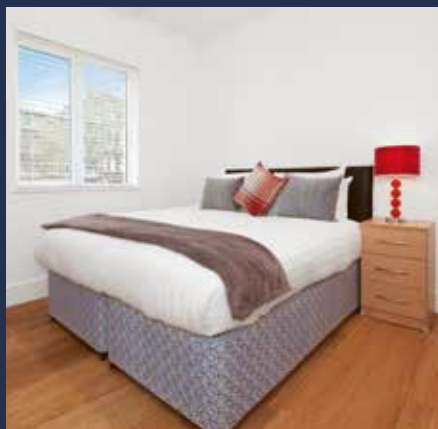
84A North End Rd, London W14 9ES

**West Kensington to Chiswick Park**  
20 minutes

**West Kensington to Oxford Circus**  
35 minutes

**West Kensington to Kensington  
High Street**  
10 minutes

**West Kensington to Heathrow Airport**  
50 minutes



# LONDON AS YOUR CLASSROOM

A global, vibrant and diverse city, London has been voted by students as the top city in the world to study (QS, 2021, 2022, & 2023), providing a wealth of cultural and career opportunities.

London is the European and global hub for many industries, most notably finance, with the headquarters of major banks like Barclays and the Bank of England located in the City of London and many international companies recruit in London, such as Google, Amazon and Unilever.

You can also find free culture! The city is home to some of the best museums in the world, including the Natural History Museum, the British Museum, the

Imperial War Museum and the Victoria and Albert Museum. And they're all free to get in!

All of London is easily accessible from our campus facility in Chiswick, west London.

London has an excellent transport system spanning the city consisting of underground and overground trains, buses, bikes, cars and even trams and cable cars.

**London is yours to explore while you study here.**



# THE RICHMOND INTERNSHIP

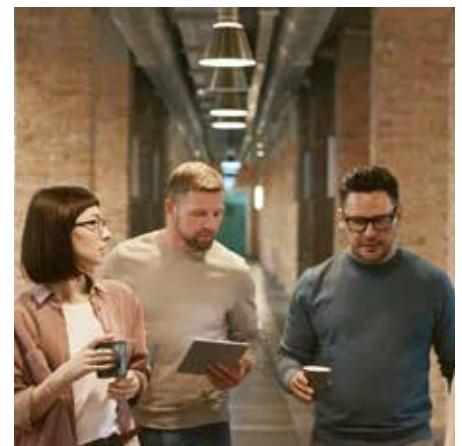
Richmond is able to offer students who meet the minimum requirements of the internship program the opportunity to carry out an internship for academic credit (4 US credits) in the spring, summer, or fall semesters. All internships are completed over a 6 - 12 week (full time) period for a minimum of 200 hours. Students and employers can agree working hours so that students either work 40 hours or 20 hours each week, depending on the length of the internship.

All students on the Richmond internship program benefit from the support of:

- A supervisor within the work place to train and mentor them
- A faculty supervisor from within Richmond who is personally assigned to them throughout their internship and who will support them
- The overall support of the Internship Office staff throughout the program of study



**6 -12 WEEKS**  
**200 HOURS**  
**(MINIMUM)**  
**4 US CREDITS**



*My time in Richmond was one of the best times of my life, not only because of its location but also because I've had the best teachers in my entire university degree. I can also say that you will find friends for life, and that there is always something to do in London!"*

**NATALIA FERNANDEZ**

Visiting Student

# ENTRY REQUIREMENTS

## ACADEMIC REQUIREMENTS

Please visit our website for qualification and country specific requirements along with further guidance on our academic admissions requirements: [richmond.ac.uk/undergraduate-admissions](http://richmond.ac.uk/undergraduate-admissions)

## ENGLISH LANGUAGE REQUIREMENTS

If you are not from a majority English speaking country, you will normally be required to have achieved CEFR level B2 in a recognised English language test or qualification that is acceptable to the University prior to entry to the program.

Acceptable tests include IELTS, TOEFL and PTE. Please see our website for the range of English language tests that may be used for admission.

## ENGLISH LANGUAGE REQUIREMENTS BASED ON QUALIFICATION

Applicants who are not native speakers of English must demonstrate the required level of English Language proficiency indicated below. There are a number of ways this can be achieved:

- A valid (in date) recognised English Language test for those who require a Student Visa (programs longer than 6 months in duration) to study in the UK
- Nationals from a Majority English Speaking Country\* as defined by the UKVI, are not required to provide proof of English language proficiency
- Completion of an undergraduate program in the UK

Qualification	Requirement	Validity Period
IELTS (Academic)	5.5 with 5.5 in Reading, Listening, Speaking and Writing	2 Years
TOEFL iBT	72 with 17 Listening, 18 Reading, 17 Writing, 20 Speaking	2 Years
ELLT Oxford International	B2 in each of the four components	2 Years
Pearson Test of English	51 with 51 in each component	2 Years

All information is correct at the time of publication. Please check our website for up to date requirements.





# HOW TO APPLY

Complete and submit a direct online application available at [richmond.ac.uk/admissions/undergraduate-admissions](http://richmond.ac.uk/admissions/undergraduate-admissions)

## Attach the following supporting documents

- A personal statement of approximately 500 words
- Official high school transcripts/final examination results and certificates
- Evidence of English language proficiency, e.g. IELTS. Other English language tests may be provided but please contact us for further advice
- Copy of the photograph and signature pages\* from a valid passport\*\*
- Copy/Copies of all previous UK Visas\*

\* If applicable

\*\* Required of all applicants, including UK citizens

Please note: for Transfer Students with fewer than 30 credits, submission of your High School grades are required in addition to your current in-progress University transcripts.

## DEADLINE FOR DIRECT APPLICATIONS

For autumn (fall) entry, students who require a visa to study in the UK should submit a direct application and supporting documents by 1st July. Applications will still be considered beyond this point on an available space basis, as priority will be given to applications received by the deadline.

## WHAT HAPPENS NEXT?

Your application will be given to an Admissions Officer and a decision will be made on your application.

## THE OFFER

If your application is successful, you will be sent an offer of admission via email. Your offer letter will state the conditions of your offer, if applicable, and information on how to accept your offer.

## TUITION FEES

The most up-to-date information about our tuition fees can be found on our website: [www.richmond.ac.uk/undergraduate-student-tuition-fees-and-funding/](http://www.richmond.ac.uk/undergraduate-student-tuition-fees-and-funding/).

## WHICH FEES SHOULD I PAY?

The fee you have to pay will depend on your fee status as a UK, EU, US or international student.



# CONTACT US

## INTERNATIONAL PROGRAMS TEAM

Richmond American University London  
Building 12  
Chiswick Park  
566 Chiswick High Road  
London W4 5AN

### **Chiara Mortarino Bowie**

North American Programmes Coordinator

Email: [chiara.mortarino@richmond.ac.uk](mailto:chiara.mortarino@richmond.ac.uk)

### **Camille Brewster**

International Programmes Liaison

Email: [brewstc@richmond.ac.uk](mailto:brewstc@richmond.ac.uk)

### **Maggie Burton**

Global Mobility Officer

Email: [burtonm@richmond.ac.uk](mailto:burtonm@richmond.ac.uk)

## **Richmond is an equal opportunity university**

It does not discriminate in admissions, employment or access to programmes. The policy of the University is that students, applicants and employment candidates are considered without regard to race, colour, religion, sex, sexual orientation, national or ethnic origin or age. The University complies with the Equality Act 2010. Background information on Richmond

The University's history is linked to the building which was its original location on Queen's Road in Richmond where construction started in 1841 and was completed in 1843, when it opened as the Wesley Theological Institution. Later known as Richmond College, it became part of the University of London, whose degrees it awarded until 1971. In 1972, it became Richmond College, an independent, international, not-for-profit liberal arts college. Today the University is known as Richmond American University London, based in Chiswick Park. Richmond is accredited by the Middle States Commission on Higher Education, 3624 Market Street, Philadelphia, PA 19104 (267-284-5000).

Richmond is licensed to award Associate of Arts, Bachelor of Arts, Bachelor of Science, Master of Arts, and Master of Business Administration degrees by the Department

of Education in the State of Delaware. The University is incorporated as a not-for-profit educational institution in the State of Delaware, USA, and is a recognised 501(c)(3) public educational charity under US law. In the UK, Richmond has UK Taught Degree Awarding Powers by the Privy Council.

Richmond's degrees are also designated by the Secretary of State for Education of Her Majesty's Government in the United Kingdom The Education (Recognised Awards) (Richmond The American International University in London) Statutory Order 2017 (SI 1185) dated 30 November 2017, Statutory Order 2016 (SI 1209) dated 12 December 2016 and Statutory Order 2006 (SI 3121) dated 23 November 2006. The University has "Highly Trusted Sponsor" status as defined by the United Kingdom UK Visas and Immigration Agency.

Richmond has been a voluntary subscriber to the QAA since August 2009. The Quality Assurance Agency for Higher Education (QAA) conducted a Higher Education Review for Alternative Providers in December 2017, and Richmond was found to have met expectations in all review judgements including: the academic standards of the

awards the University offers, the quality and enhancement of student learning opportunities and the publication of information about those opportunities. The full reports can be consulted at: [qaa.ac.uk/reviewing-higher-education/quality-assurance-reports/Richmond-The-American-International-University-in-London](http://qaa.ac.uk/reviewing-higher-education/quality-assurance-reports/Richmond-The-American-International-University-in-London).

Richmond is independent and not affiliated with other institutions including the University of Richmond, nor with other American universities throughout the world. The information in this publication is correct at the time of going to print, however information may be subject to change.

This document was prepared before the academic period/s to which it relates in order to provide applicants with an overview of the academic programmes available and contingent support services. Changes such as amendments to programme titles, programme content and fee information are possible. Richmond, The American International University in London (RAIUL) reserves the right to modify its provision accordingly. This document is for guidance only and does not form part of any contract between the University, the prospective student or any other stakeholder. It is subject to change without notice.





Building 12, Chiswick Park, 566 Chiswick High Road, London, W4 5AN

**[WWW.RICHMOND.AC.UK](http://WWW.RICHMOND.AC.UK)**

© Richmond, The American International University in London, 2024